

## Anti-HLA-E hlgG1 Antibody(ABX-0020)

### Product information

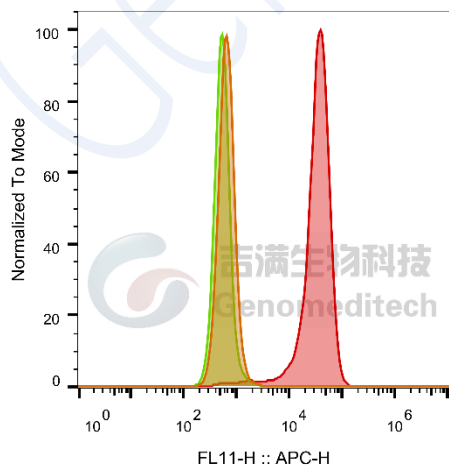
GM-49158AB-10	10 µg
GM-49158AB-100	100 µg
GM-49158AB-1000	1 mg

### Antibody Information

Species Reactivity	Human
Clone	ABX-0020
Source/Isotype	Monoclonal human IgG1, κ
Application	Flow cytometry;
Other Names	HLA-6.2, QA1
Gene ID	P13747 (human)
Storage	Store at 2-8°C short term (1-2 weeks).Store at ≤ -20°C long term. Avoid repeated freeze-thaw.
Formulation	Phosphate-buffered solution, pH 7.2.
Endotoxin	< 1 EU/mg, determined by LAL gel clotting assay

### Data Examples

Flow cytometry H\_HLA-E HEK-293 Cell Line (Catalog # GM-C19357) was stained with Anti-HLA-E hlgG1 Antibody(ABX-0020) or isotype control antibody.



SampleID	Geometric Mean : FL11-H
HEK-293 anti-HLA-E+APC-2nd Ab	677
HEK-293 H_HLA-E H_IgG+APC-2nd Ab	553
HEK-293 H_HLA-E anti-HLA-E+APC-2nd Ab	31221

Fig. FACS

Version:0.3.2.240521